



MONTHLY MEMBERSHIP PROGRESS REPORT

District 11 B2

Results as of: 6/30/2015

GMT: THOMAS MATNEY

LOCATION MICHIGAN

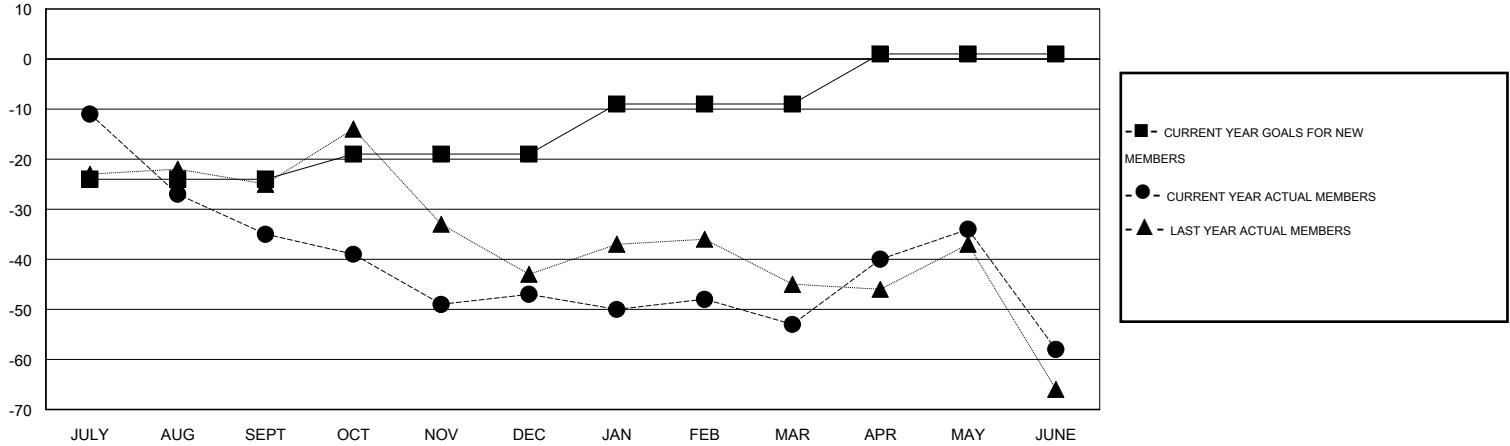
GMT CA 1

Clubs					Members				
RESULTS FOR 2014-2015					RESULTS FOR 2014-2015				
QUARTER	NEW CLUB GOAL	NEW CLUBS	DROPPED CLUBS	NET GAIN/LOSS	QUARTER	NEW MEMBER GOAL	CHARTER AND NEW MEMBERS ADDED	DROPPED MEMBERS	NET GAIN/LOSS
JULY/AUG/SEPT	0	0	1	-1	JULY/AUG/SEPT	-24	9	44	-35
OCT/NOV/DEC	0	0	0	0	OCT/NOV/DEC	5	18	30	-12
JAN/FEB/MAR	0	0	0	0	JAN/FEB/MAR	10	30	36	-6
APR/MAY/JUNE	0	0	0	0	APR/MAY/JUNE	10	49	54	-5

GOALS AND ACTUAL NEW CLUBS CUMULATIVE



GOALS AND ACTUAL MEMBERS CUMULATIVE



DROPPED CLUBS: 1	23 CLUBS OF 41 ADDED 1 OR MORE NEW MEMBERS	<u>GENDER DISTRIBUTION</u>	
		MALE	715 (70.30%)
<u>DROPPED MEMBERS</u>		FEMALE	302 (29.70%)
DECEASED	19	CLICK HERE FOR HEALTH ASSESSMENT DATA	
CLUB CANCELLED	0		
OTHER	145		
TOTAL	164	FAMILY UNIT MEMBERS	239
		HEAD OF HOUSEHOLD	118
		NON-HEAD OF HOUSEHOLD	121